



INDIANA UNIVERSITY

# Economic Development & Engagement

Tony Armstrong

Executive Director

Office of the Vice President for Engagement

June 13, 2008



INDIANA UNIVERSITY

## “Innovate Indiana”

Broad range of activities and initiatives

- Establishing a full-fledged incubator facility in Bloomington at 10<sup>th</sup> and the bypass
- Expanding capacity of the ETC in Indianapolis—wet labs, graduation, related activity
- Collaboration and special initiatives with Purdue and University of Notre Dame
- Joint ventures with Clarian Health, BioCrossroads, and other strategic partners
- Close coordination with lead campus economic development colleagues
- New operational structure and advisory council



INDIANA UNIVERSITY

## Central Point of Contact

- Strategic objective...achieving focus
- Coordination of effort among regional campuses, medical education centers, tech parks...one voice
- Developing website
- Innovate Indiana brand
- Multiple audiences

INDIANA UNIVERSITY

Search

About IU Academics Arts & Culture Campuses Community Outreach Economic Development International Research Sports & Recreation Technology

### Economic Development & Engagement

Business Formation  
Education & Workforce Development  
Policy Leadership & Development  
Research Infrastructure  
Inventions & Products  
Quality of Life  
Contact Us

**Strategic Plan**

Economic Development and Engagement Strategic Plan  
Download (3.3MB)

**Innovate Indiana Initiatives**

- Business Startups in Bloomington
- Center for Entrepreneurship
- Investors Technology Park
- IU's Office of Engagement
- IU Emerging Technologies Center Expansion
- IU Northwest Health and Human Services
- South Bend Cancer Research Center

**Top Resources**

- IU Emerging Technologies Center
- IU Research & Technology Corporation (IURTC)
- Office of Technology Transfer

**Headlines**

- Study details cultural, economic impact of Jacobs School of Music
- John Graham to lead IU School of Public and Environmental Affairs
- \$1.2 million NIH project will help track and predict epidemics

## INNOVATE INDIANA

Entrepreneurs Strategic Plan Innovation Policy

**VP for Engagement**  
Bill Stephan

**Innovative Invention**  
CompuCell3D under development

**Addressing the Nursing Shortage**  
IU graduate ARI honors in 2017

### About Innovate Indiana

**Indiana's economy is at a crossroads.**  
Discovery, creativity, and brilliant ideas are fueling income growth and new jobs now more than ever. Innovation will drive Indiana's economy in the 21st century, and Indiana University is paving the way.

The highway to better lives for Hoosiers requires the intellectual capital that stimulates Indiana's business development. With eight campuses and nine medical education centers that provide rich resources in technology, life sciences, entrepreneurship, and the arts, IU has the vital assets needed to transform our economy at home and in the global interchange.

Innovate Indiana is the name for Indiana University's efforts to channel the university's vast resources to strengthen the Hoosier economy. The Office of the Vice President for Engagement is the central point of contact for Innovate Indiana. The office is:

- Investing in and coordinating IU's economic development activities across the state,
- Turning the innovations of IU faculty into new products, services, and treatments, and
- Connecting the business community in Indiana, the nation, and the world to IU.

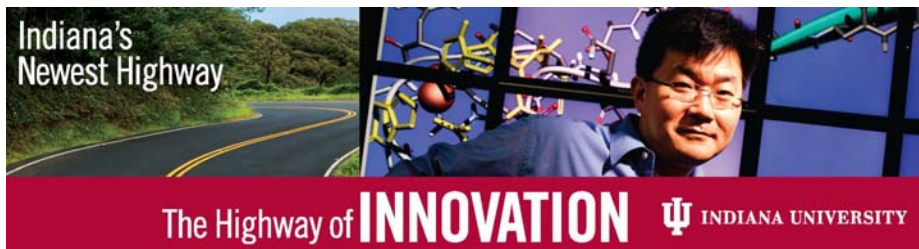
Indiana has the fourth lowest business costs in the nation.



INDIANA UNIVERSITY

## Communications Strategy

- Internal audiences
- External audiences
- Key stakeholders
- Update and refresh



INDIANA UNIVERSITY

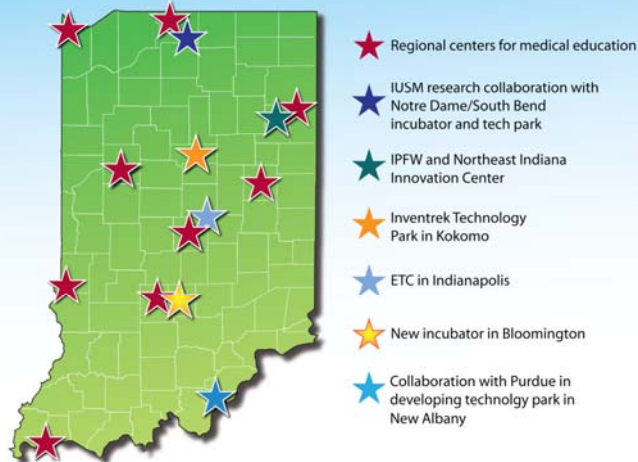
## Aggregating Existing Statewide Resources

- Regional campuses and centers for medical education
- IUSM research collaboration with Notre Dame/South Bend incubator and tech park
- IPFW and Northeast Indiana Innovation Center
- Inventrek Technology Park in Kokomo
- ETC in Indianapolis
- New incubator in Bloomington
- Collaboration with Purdue in developing technology park in New Albany



INDIANA UNIVERSITY

## Innovate Indiana Statewide Map



INDIANA UNIVERSITY

## Indiana University Research & Technology Corporation

- President McRobbie appoints new board members
- Tony Armstrong named interim president
- Operational audit in progress
- Comprehensive assessment underway
- Benchmarking Big Ten, national peers and leaders
- Stakeholder interviews, focus groups
- Building new organizational structure that aligns with university's needs and aspirations



INDIANA UNIVERSITY

## IU Emerging Technologies Center

- Facilities audit underway
- ETC at capacity later this spring
- State funding to support renovation/expansion
- Broader environmental scan based on existing and projected demand for space
- Experiences will influence IUB incubator facility planning and development



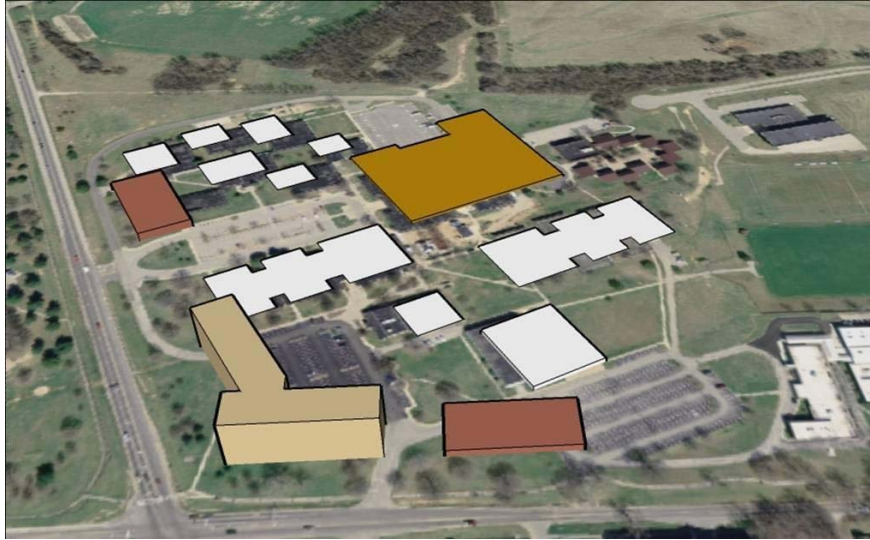
INDIANA UNIVERSITY

## IUB Incubator Facility

- 10<sup>th</sup> and the Bypass
- Working with City of Bloomington
- 40,000 sq. ft. facility with wet labs/dry labs/open space
- Pervasive Tech Labs
- Student friendly
- Johnson Center for Entrepreneurship & Innovation
- IUETC/ Purdue Research and Discovery Parks/ University of Illinois/Others



INDIANA UNIVERSITY



INDIANA UNIVERSITY





INDIANA UNIVERSITY

## Cyber Infrastructure – Data Center





INDIANA UNIVERSITY

## Thank You

Innovate Indiana and  
Economic Development at IU

<http://innovate.indiana.edu/>

Tony Armstrong

Executive Director

Office of the Vice President for Engagement

[atarmstra@indiana.edu](mailto:atarmstra@indiana.edu)